

 **Auto-Connect**

WCA



WIRELESS ADAPTER
CarPlay



INTRODUCTION

Thank you for buying this Auto-Connect product. We strive to offer quality accessories for your system.

Please read the user manual carefully before using this product. We recommend that you save the user manual and the packaging for possible future usage.

PACKAGING CONTENT

1x Wireless CarPlay Adapter

1x USB-A to USB-C port adapter

1x 3M adhesive sticker

1x User manual



CHECK COMPATIBILITY


- Please make sure that your head unit supports the wired CarPlay function.
- The Auto-Connect wireless adapter is compatible with iPhone 6 and later models.
- Make sure that the iPhone has the iOS 10 or newer system version installed.

To check if your head unit / car model has the CarPlay function. Try to connect your iPhone to the head unit via an USB cable, or check your head unit's display for the official CarPlay app.

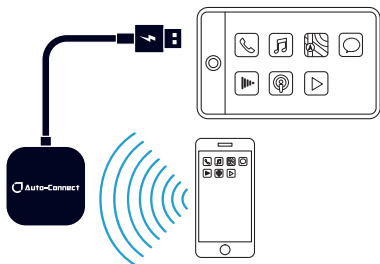
You can also check with your car manufacturer to see if your car has the functions needed.



INSTALLATION

- 1) Start your vehicle and wait for the head unit system to finish loading / starting.
 - 2) Connect the Auto-Connect WCA wireless adapter to the USB port in your car. Make sure that you use the USB port that is used for the wired CarPlay function.
 - 3) Start your iPhone and use the settings to activate WiFi and Bluetooth on your phone.
 - 4) Go to your phone's Bluetooth settings and locate the unit named "smartDongle-****". The last four symbols in the name is a unique ID for every WCA wireless adapter. Select the unit and press "pair" for the Bluetooth Pairing Request.
 - 5) Press "Allow" for the Allow Contacts and Favorites Sync. Finally, press "Use CarPlay" for the Use CarPlay with "smartDongle-****".
 - 6) The installation of the Auto-Connect WCA wireless adapter is now complete. Enjoy the functions and smoothness of wireless CarPlay in your vehicle!
- 

INSTALLATION



PLEASE NOTE

- The Auto-Connect WCA wireless adapter use Bluetooth to establish a pairing between the iPhone and the vehicle, then it switches over to using WiFi instead to maintain the wireless connection. After the Bluetooth pairing is successful, the iPhone WiFi will automatically connect to the adapter's WiFi, and then disconnect the Bluetooth connection.
- Make sure that the Auto-Connect WCA wireless adapter's power indicator is lit and glows in blue.

FAQ

What is the WiFi password for the WCA adapter?

To connect your iPhone to the wireless adapter, we use Bluetooth. Once the Bluetooth connection has been successful, the adapter will switch over to WiFi connection automatically, no password is needed. Just make sure both the Bluetooth and the WiFi is activated (and unoccupied) when you pair the units.

Why do phonecalls get rejected and/or forwarded to voicemail? Why does the Microphone not work?

Make sure that your audio output option is on CarPlay when you have a call. Check your iPhone's Bluetooth so it's not connected to any other device automatically, for example headphones.

Why is there no sound playing and/or the music playback gets interrupted or paused?

Check your iPhone's Bluetooth connection so it is not connected to any other devices, for example a speaker or headphones.



FAQ

Why is the blue power indicator light on the adapter still glowing after the car has been turned off?


When you turn off the car, not all of the power is cut off immediately. It may take some time before the indicator light stops glowing and the power is completely turned off. Rest assured that the adapter's power consumption is minimal and will not drain the car battery.

Can I use the iPhones WiFi connection to browse the internet while I am using the WCA adapter?

When the WCA wireless adapter is activated, the iPhone's WiFi will be occupied by the adapter. You can not use the WiFi internet connection on your phone at the same time. You can however browse using 4G/5G internet connection via your SIM card instead.

Can I pair several phones with the adapter?

The Auto-Connect WCA wireless adapter can be paired with a maximum of five (5) iPhones, but only one device can be connected to the adapter at the same time. If you want to connect a new iPhone to the adapter, please cancel the current connection with the previous iPhone first. The system will automatically try to re-connect to the latest connected iPhone.



FAQ


Why does the adapter not reconnect automatically?

- 1) Make sure that the Bluetooth and WiFi settings are both activated and the Bluetooth is not connected to any other device.
- 2) After the first successful connection has been made, the adapter will automatically try to reconnect to the latest connected iPhone.
- 3) Follow the installation instructions shown earlier in this user manual. If it still does not work, clear the pairing record, restart your iPhone and restart the WCA wireless adapter.

Why can't I find a Bluetooth and/or WiFi connection for the WCA wireless adapter?

Make sure that the adapter's power indicator is lit and glowing in blue. Be sure that the adapter has been plugged in the USB port that is for the wired CarPlay.

If possible, try to use another iPhone to test the pairing possibilities to check if it is the specific iPhone or the adapter that causes the problem. If the same issue happens with several iPhones, please contact your local Auto-Connect dealer/distributor.




ONLINE UPDATE

In the unlikely event that your Auto-Connect WCA wireless adapter does not work, and you have tried all the instructions in the manual and FAQ steps, you can check if there is any firmware update available for you to download to the adapter.

NOTE!

Only use this step as a last resort, or if you have been recommended to do it by your local Auto-Connect dealer/distributor.

Update steps

- 1) Power up the adapter
 - 2) Connect the adapter to WiFi, the password is 88888888.
 - 3) Open the safari browser on your iPhone and enter "192.168.1.101" and hit enter to access the settings page for the wireless adapter. Click the "Update" button if there is a firmware update available.
 - 4) If some problems occur after you have updated the firmware, please restore the adapter to factory settings.
- 



Auto-Connect is a registered trademark by Winn Scandinavia AB

Winn Scandinavia AB | Idrottsvägen 37, 70232 Örebro, Sweden
www.winnscandinavia.com

Winn Scandinavia AB reserves for possible typos, factual or numeric errors that may have been printed on any products, package designs, user manuals and/or other included accessories.

The logo consists of a stylized circular icon on the left, formed by two overlapping shapes: a light blue one and a dark blue one, creating a sense of motion or connection. To the right of this icon is the text "Auto-Connect" in a bold, sans-serif font. "Auto" is in light blue, and "Connect" is in dark blue.

Auto-Connect

